

St. Louis Council of Construction

Consumers

May 31, 2018



Washington University in St. Louis

EMERGENCY MANAGEMENT



Introductions

 Washington University in St. Louis
EMERGENCY MANAGEMENT

**PREPARE
YOURSELF
BE READY**
EMERGENCY.WUSTL.EDU

Potential Hazards



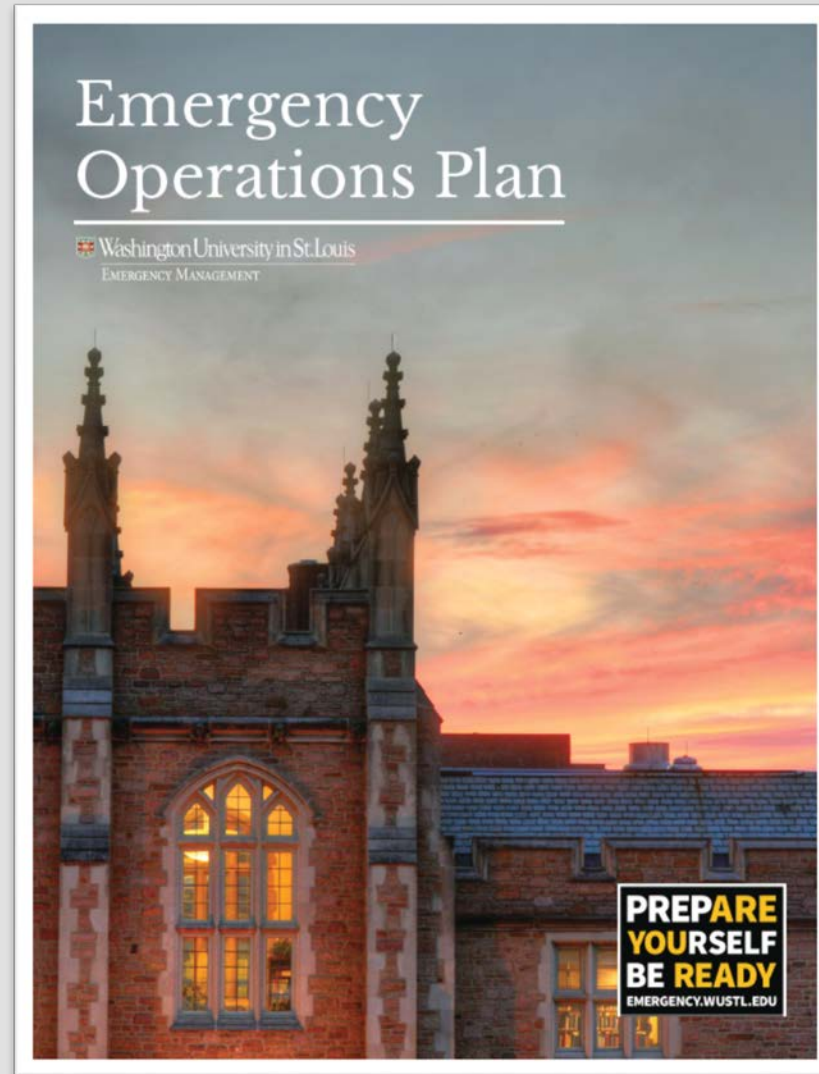
Mitigation



- Mitigation purpose
- Mitigation Planning Committee
- Plan components
 - University profile
 - Hazards risk assessment
 - Impact assessment
 - Mitigation goals and activities



Emergency Operations Plan (EOP)



Purpose



- To direct the actions of departments and agencies in the event of an emergency/disaster
- Lays framework to save lives, minimize injuries, protect property...preserve university functions
- Outlines actions for university departments and stakeholder agencies
- Deals with events that do not occur on a daily basis and/or cannot be handled quickly by response personnel

Emergency Support Functions



ESF 1 Transportation

ESF 2 Communication

ESF 3 Facilities/Infrastructure

ESF 4 Fire

ESF 5 Emergency Management

ESF 6 Emergency & Human Services

ESF 7 Resource Management

ESF 8 Health & Medical

ESF 9 Search & Rescue

ESF 10 Hazardous Materials

ESF 11 Animal Care

ESF 12 Energy & Utility Services

ESF 13 Law Enforcement

ESF 14 Damage Assessment

ESF 15 Public Affairs

ESF 16 In-Place Protection & Evac

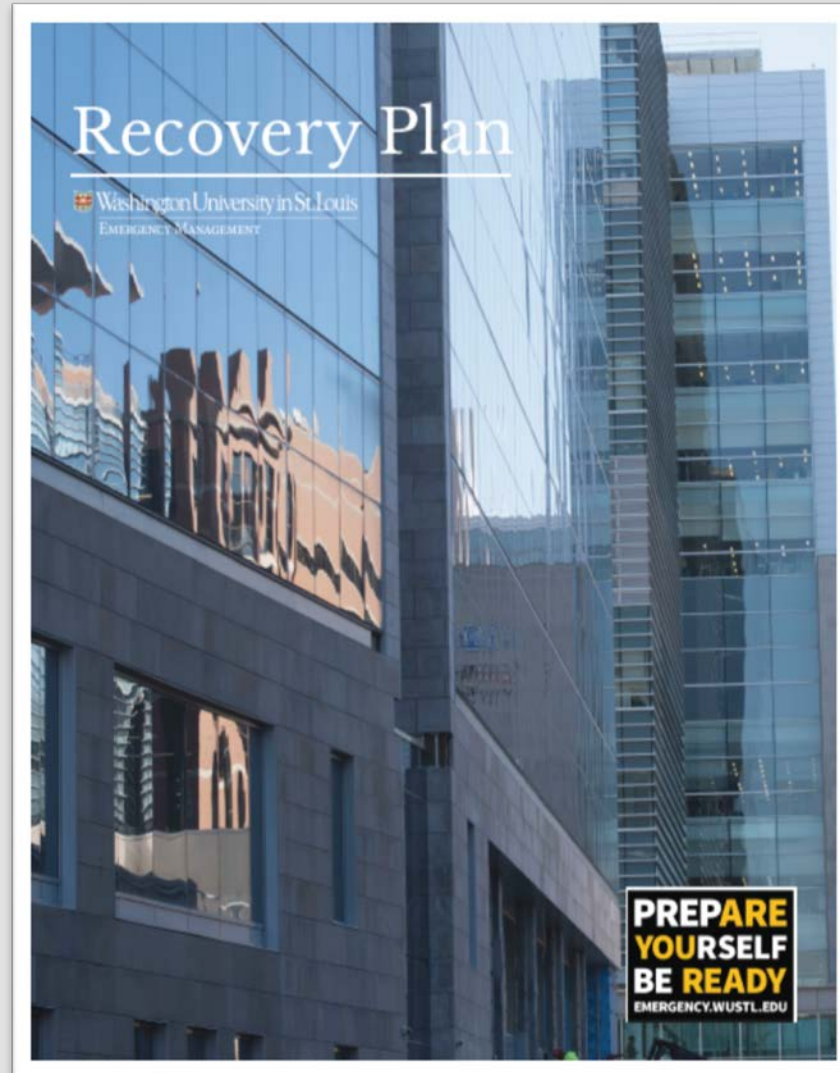
ESF 17 Human Resources

ESF 18 Student Svcs. Management

ESF 19 I.T. Services

ESF 20 Volunteer/Donations Mgt.

Recovery Plan



Previous Emergency Operations Centers

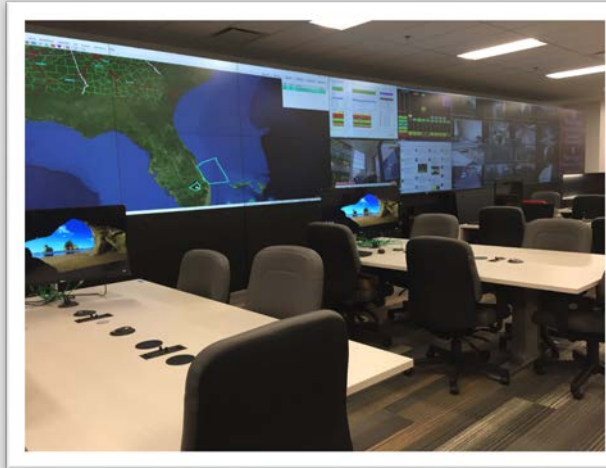


Emergency Operations Center



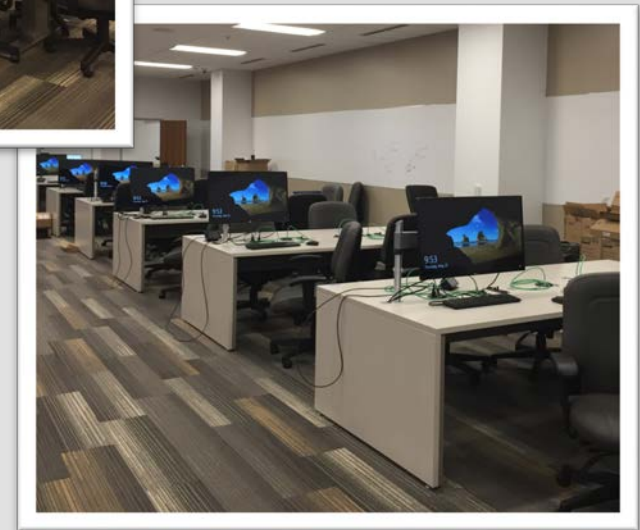
Events:

- Employee picnic
- Presidential debates
- W.I.L.D.
- Commencement
- Scheduled protests

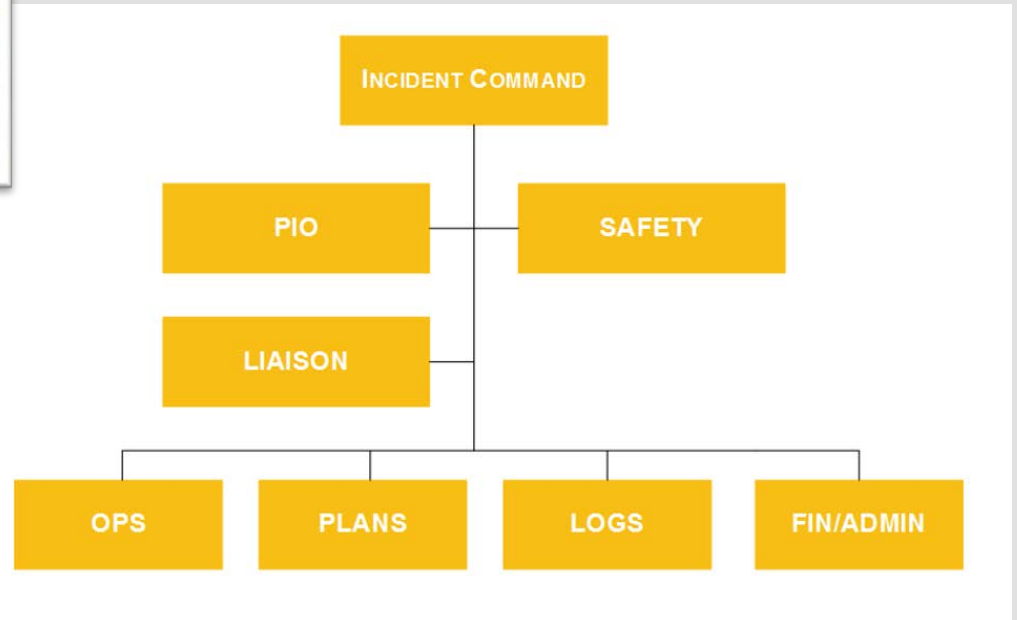


Incidents:

- Ice storms
- Regional flooding
- Building flooding
- Student deaths
- Shooting incidents on campuses
- International support to faculty and students (Turkey coup)
- Liaison support to partner hospitals during incidents



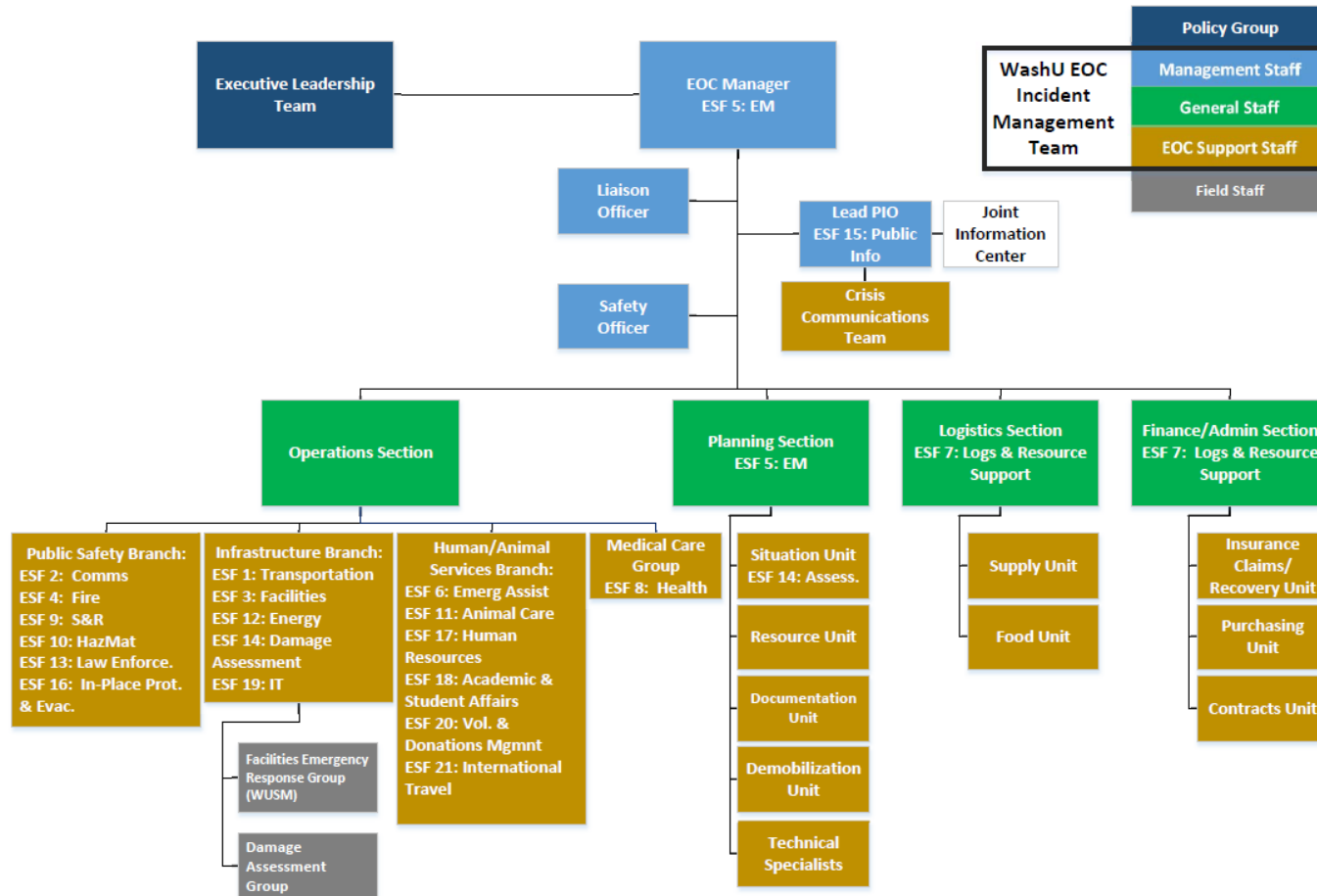
Incident Command System



Organizational Structure



WashU Emergency Operations Center (EOC) Organizational Structure





Home Alerts Threads Rooms Start a Room

Washington University in St. Louis (ORIS)/EOC (GROUP)
Planned Event - Commencement (ROOM)

Dashboard

Go To...

Set Viability...

Add Title

Create New Board

Print Dashboard

#WashU18

2018 Commencement Activities Filter Form Entries...

Time	Event	Location/Descrip.
07:00	Brookings Terrace Closed	Brookings Terrace will be closed during ceremony
08:00	Candidates assemble	Designated points
08:30	Procession starts	Quad
11:00	Ceremony ends	Quad
11:00	Fox School Reception	Steinberg Hall Terrace
11:00	Engineering Reception	Lopata 303
11:00	Univ College Reception	Women's Building Lounge
11:00	Occupational Therapy Reception	Holmes Lounge
11:00	Graduate School Reception	Lawn south of Cupples II
11:00	College of Arts / Sciences Recep...	Lawn west of Olin Library

Links

- Commencement Schedule - All ceremonies
- New Event Activity
- New Entry: Incident Status Update
- EM Tweetdeck Status Board
- NWS STI Forecast
- Ceremony live streaming link (8-30)

Commencement Status Board Filter Form Entries...

Date/Time	Name	Dept.	What is your status update?
2018-May-24 08:22	Theresa Horn	Emergency Management	Graduation is ending
2018-May-18 10:09	Anna Taylor	Emergency Management	Ceremony has ended
2018-May-18 08:30	Brandon Rob...	Emergency Management	The procession for 2018 Commencement has begun.
2018-May-18 07:53	Brandon Rob...	Emergency Management	NWS confirms no lightning associated with the rain system moving in.
2018-May-18 07:20	Anna Taylor	Emergency Management	NWS update - heavy rain to start around 7:45 - 7:50 a.m. WashU to see moderate to heavy
2018-May-18 06:50	Brandon Rob...	Emergency Management	All remote, alternate viewing locations, including the Athletic Complex will be open for v
2018-May-18 06:30	Brandon Rob...	Emergency Management	Commencement will take place outdoors at 0830 using rain shortened ceremony.
2018-May-18 06:00	Anna Taylor	Emergency Management	EM staff monitoring weather conditions at Danforth EOC
2018-May-18 06:00	Anna Taylor	Emergency Management	Per NWS latest update, percent chance increased to 80% throughout commencement pe

STL Radar

Commencement Key Documents

- Commencement Emergency Guide
- Commencement 2018 Traffic Plan
- Commencement IAP
- Commencement 2018-SPECIAL SECURITY CONSIDERATIONS
- Public Affairs News Team
- Commencement assignments

Key Numbers

- Commencement Emergency Guide: NWS: 838-447-1887
- Commencement 2018 Traffic Plan: Frank Cell: 314-657-8873

WashU Continuity

Program

 Washington University in St. Louis
EMERGENCY MANAGEMENT



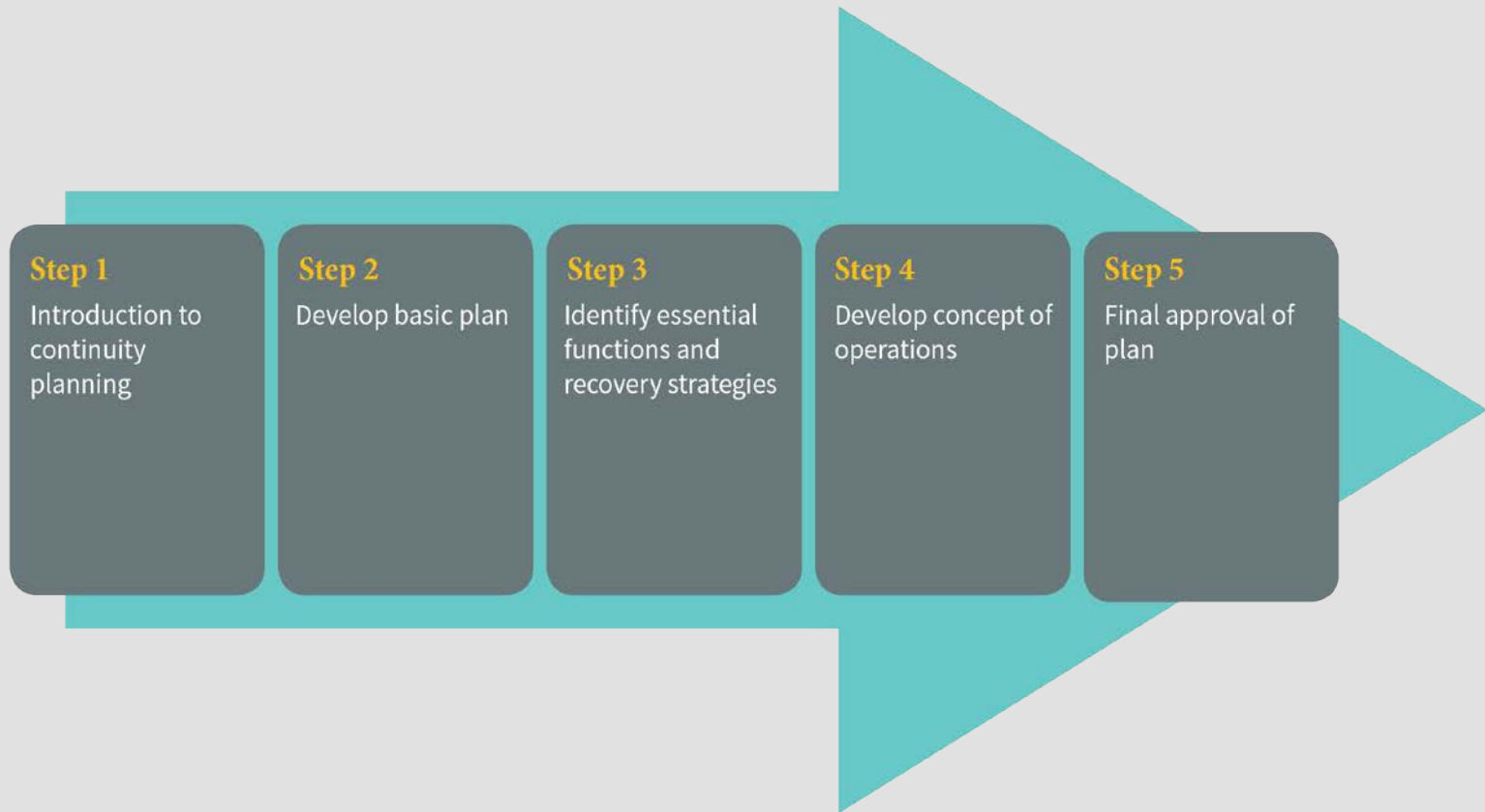
**PREPARE
YOURSELF
BE READY**
EMERGENCY.WUSTL.EDU

Keys to a successful continuity program



- **Why**
 - Why does your organization need continuity plans?
- **What**
 - What are you trying to accomplish with planning?
- **Who**
 - Who needs continuity plans?
- **How**
 - How will you facilitate the process of completing continuity plans?

Planning Process



Step 1

Introduction to continuity planning

Step 2

Develop basic plan

Step 3

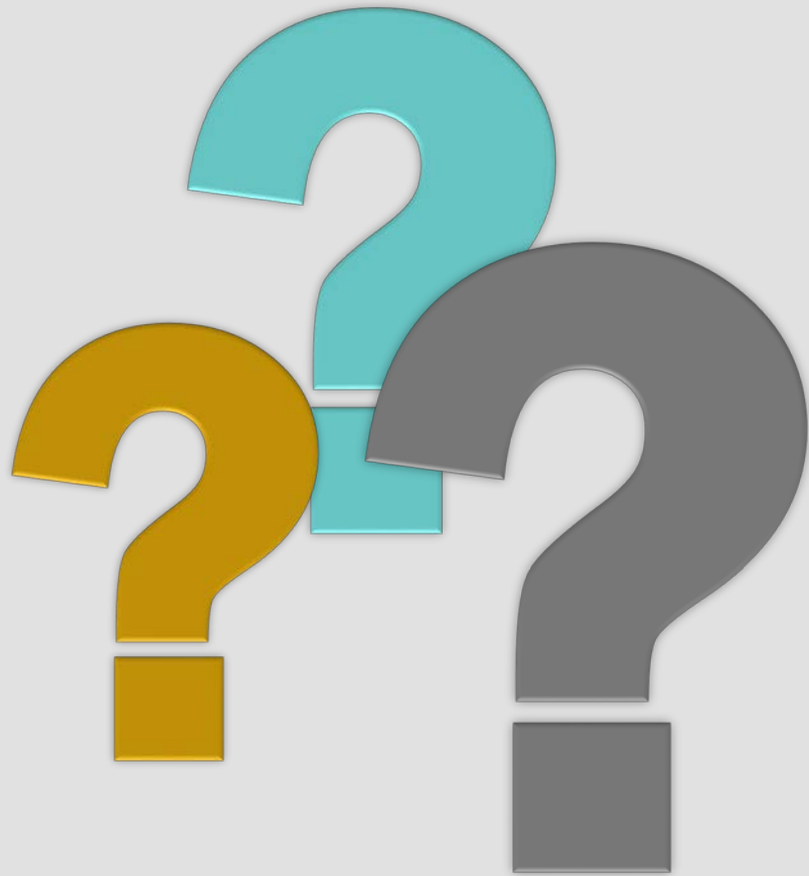
Identify essential functions and recovery strategies

Step 4

Develop concept of operations

Step 5

Final approval of plan



Questions?

Contact Information

Emergency Management

washuready@wustl.edu

WashU EM: 314-747-5092



Washington University in St. Louis

EMERGENCY MANAGEMENT

